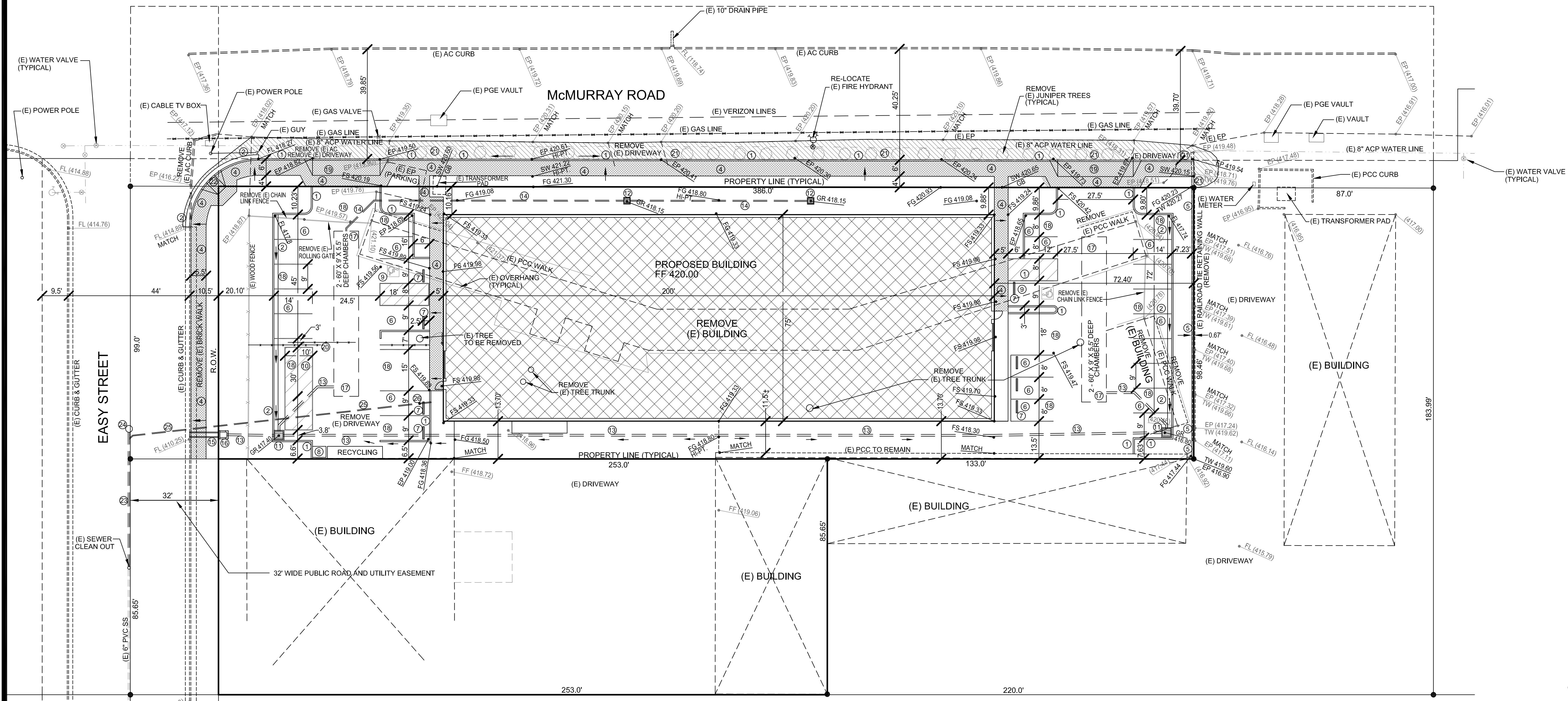


U.S HIGHWAY 101



- LEGEND**
- ① PCC CURB
 - ② PCC CURB & GUTTER
 - ③ PCC GUTTER
 - ④ PCC SIDEWALK
 - ⑤ BLOCK RETAINING WALL
 - ⑥ PARKING SPACES
 - ⑦ CURB STOP (TYPICAL)
 - ⑧ TRASH RECEPTACLE PER ARCHITECT'S PLAN
 - ⑨ HANDICAP PARKING
 - ⑩ 10' X 30' LOADING ZONE
 - ⑪ 3' X 3' CATCH BASIN
 - ⑫ 2' X 2' CATCH BASIN
 - ⑬ 12" DRAIN PIPE
 - ⑭ 4" DRAIN PIPE
 - ⑮ PARKWAY DRAIN PER APWA STD. 151-1
 - ⑯ CURB DRAIN INLET (CASE 1) PER APWA STD. 150-2
 - ⑰ 2 - 60' X 9' X 5.5' DEEP CHAMBERS
 - ⑱ AC PAVING
 - ⑲ PCC DRIVEWAY APPROACH
 - ⑳ ROLLING GATE PER ARCHITECT'S PLAN
 - ㉑ NEW AC AND BASE
 - ㉒ HANDICAP ACCESS RAMP
 - ㉓ EXTEND (E) SS
 - ㉔ NEW SSMH
 - ㉕ 4" SS LAT
 - ㉖ SSCO
- (E) = EXISTING
 AC = ASPHALT CONCRETE
 FF = FINISH FLOOR
 EP = EDGE OF PAVEMENT
 FL = FLOW LINE
 FG = FINISH GRADE
 TC = TOP OF CURB
 FS = FINISH SURFACE
 SW = SIDEWALK
 SS = SANITARY SEWER LINE
 PCC = PORTLAND CONCRETE CEMENT
- EXISTING GRADE
 —●— PROPOSED GRADE

**890 McMURRAY ROAD
 BUELLTON, CA.**

PRELIMINARY GRADING PLAN

J.B. DIXON ENGINEERING & SURVEYING, INC.



200 E LAUREL AVE
 LOMPOC, CA. 93436

PH. (805) 736-5523
 FAX. (805) 736-5513
 E-MAIL: jim@jbdixon.com

SHEET 1 OF 1

SCALE: 1" = 20' DATE: 12/29/14 3410PRLM3